

BVD PI Sample Collection Procedure

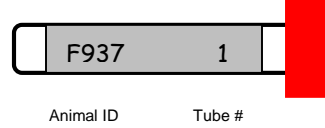


Ear Notch

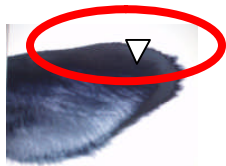
1. Red top sample tube (5ml)
2. Small ear notcher
3. Shipping container with ice packs
4. Sample submission forms (Provided by API)

Collection Procedure:

1. Write tube number and individual animal ID on tube



2. Ear Notch - small ear notch placed in dry tube. (Do not place in formalin or PBS). Be consistent where the notch is taken, we prefer the top outer third of the ear.



Approx. size of notch



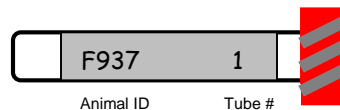
3. Keep notchers clean and free of blood and hair buildup.
4. When disinfecting between animals, rinse notcher in mild disinfectant after notching and rinse again in clean water prior to taking notch from next animal.
5. Notch can be handled with bare hand to place in tube.
6. Keep notch free of all tattoo ink.
7. Maintain collected samples in a cooler with ice packs or in freezer prior to shipment.
8. Samples can be frozen right after collection and tested within 30 days.

Serum

1. Serum Separator tube (5ml)
2. Vacutainer or clean syringe with new needle for each sample.
3. Shipping container with ice packs
4. Sample submission form (Provided by API)

Collection Procedure:

1. Write tube number and individual animal ID on tube.
2. Spin tubes prior to shipment.
3. Refrigerate or freeze prior to shipment.



Milk

1. Sealed milk vial 10 ml. max.
2. Shipping container with ice packs.
3. Sample submission form. (Provided by API)

Collection Procedure:

1. Write tube number and individual animal ID on vial.
2. DHI or weigh day samples with preservative are suitable samples.
3. Seal vials in plastic bags prior to shipment

For questions contact: API Sales at (877) 278-1344 or API Lab at (503) 247-8066
Headquarters: 6040 N. Cutter Circle, Suite. 317, Portland, OR 97217 www.animalprofiling.com